

Test Report



Report No. A2220500829101003

Company Name shown on Report DONGGUAN CITY HENGJIU INSULATION MATERIALS CO.,LTD  
Address BLOCK A,ZHONG YU BAO INDUSTRIAL DISTRICT,NO.40,YUAN HE WEST ROAD,YUAN JIANG YUAN VILLAGE,CHANGPING TOWN,DONGGUAN CITY

The following sample(s) and sample information was/were submitted and identified by/on the behalf of the applicant

Sample Name PTFE Heat shrinkable tube  
Material PTFE  
Sample Received Date Nov. 8, 2022  
Testing Period Nov. 8, 2022 to Nov. 11, 2022

Test Requested As specified by client, to test Lead (Pb), Cadmium (Cd), Mercury (Hg), Hexavalent Chromium (Cr(VI)), Polybrominated Biphenyls (PBBs), Polybrominated Diphenyl Ethers (PBDEs), Phthalates (DBP, BBP, DEHP, DIBP) in the submitted sample(s).

Test Method Please refer to the following page(s).

Test Result(s) Please refer to the following page(s).

\*\*\*\*\*

Conclusion

Tested Sample	According to standard/directive	Result
Submitted Sample	RoHS Directive 2011/65/EU with amendment (EU) 2015/863	PASS

\*\*\*\*\*

PASS means that the results shown on the report comply with the limits set by RoHS Directive 2011/65/EU with amendment (EU) 2015/863.



Tested by Leslie Liang

Reviewed by Cathy Huang

Approved by Helen Liu

Date Nov. 11, 2022

Helen Liu  
Lab Authorized Signatory

No. R177735931

Centre Testing International Group Co.,Ltd.  
CTI Building, Xing Dong Community, Xin'an Sub-district, Bao'an District, Shenzhen City, Guangdong Province, P.R. China

# Test Report

Report No. A2220500829101003

Page 2 of 7

**Test Method**

Test Item(s)	Test Method	Measured Equipment(s)
Lead (Pb)	Refer to IEC 62321-5:2013	ICP-OES
Cadmium (Cd)	Refer to IEC 62321-5:2013	ICP-OES
Mercury (Hg)	Refer to IEC 62321-4:2013+AMD1:2017 CSV	ICP-OES
Hexavalent Chromium (Cr(VI))	IEC 62321-7-2:2017 and/or determination of Total Chromium by IEC 62321-5:2013	UV-Vis/ICP-OES
Polybrominated Biphenyls (PBBs)	IEC 62321-6:2015	GC-MS
Polybrominated Diphenyl Ethers (PBDEs)	IEC 62321-6:2015	GC-MS
Phthalates (DBP, BBP, DEHP, DIBP)	IEC 62321-8:2017	GC-MS

# Test Report

Report No. A2220500829101003

Page 3 of 7

**Test Result(s)**

Tested Item(s)	Result	MDL	Limit
Lead (Pb)	N.D.	2 mg/kg	1000 mg/kg
Cadmium (Cd)	N.D.	2 mg/kg	100 mg/kg
Mercury (Hg)	N.D.	2 mg/kg	1000 mg/kg
Hexavalent Chromium (Cr(VI))	N.D.	8 mg/kg	1000 mg/kg
Tested Item(s)	Result	MDL	Limit
<b>Polybrominated Biphenyls (PBBs)</b>			
Monobromobiphenyl	N.D.	5 mg/kg	1000 mg/kg
Dibromobiphenyl	N.D.	5 mg/kg	
Tribromobiphenyl	N.D.	5 mg/kg	
Tetrabromobiphenyl	N.D.	5 mg/kg	
Pentabromobiphenyl	N.D.	5 mg/kg	
Hexabromobiphenyl	N.D.	5 mg/kg	
Heptabromobiphenyl	N.D.	5 mg/kg	
Octabromobiphenyl	N.D.	5 mg/kg	
Nonabromobiphenyl	N.D.	5 mg/kg	
Decabromobiphenyl	N.D.	5 mg/kg	
Tested Item(s)	Result	MDL	Limit
<b>Polybrominated Diphenyl Ethers (PBDEs)</b>			
Monobromodiphenyl ether	N.D.	5 mg/kg	1000 mg/kg
Dibromodiphenyl ether	N.D.	5 mg/kg	
Tribromodiphenyl ether	N.D.	5 mg/kg	
Tetrabromodiphenyl ether	N.D.	5 mg/kg	
Pentabromodiphenyl ether	N.D.	5 mg/kg	
Hexabromodiphenyl ether	N.D.	5 mg/kg	
Heptabromodiphenyl ether	N.D.	5 mg/kg	
Octabromodiphenyl ether	N.D.	5 mg/kg	
Nonabromodiphenyl ether	N.D.	5 mg/kg	
Decabromodiphenyl ether	N.D.	5 mg/kg	

# Test Report

Report No. A2220500829101003

Page 4 of 7

**Test Result(s)**

Tested Item(s)	Result	MDL	Limit
<b>Phthalates (DBP, BBP, DEHP, DIBP)</b>			
Dibutyl phthalate (DBP) CAS#:84-74-2	N.D.	50 mg/kg	1000 mg/kg
Butyl benzyl phthalate (BBP) CAS#:85-68-7	N.D.	50 mg/kg	1000 mg/kg
Di-(2-ethylhexyl) phthalate (DEHP) CAS#:117-81-7	N.D.	50 mg/kg	1000 mg/kg
Diisobutyl phthalate (DIBP) CAS#:84-69-5	N.D.	50 mg/kg	1000 mg/kg

**Sample/Part Description**            White translucent plastic tube

**Remark:**        **The sample(s) had been dissolved totally tested for Lead, Cadmium, Mercury.**

- MDL = Method Detection Limit
- N.D. = Not Detected (<MDL )
- mg/kg = ppm = parts per million
- 1000 mg/kg = 0.1%

股  
 份  
 有  
 限  
 公  
 司  
 日  
 常  
 服  
 务  
 热  
 线  
 400-6788-333

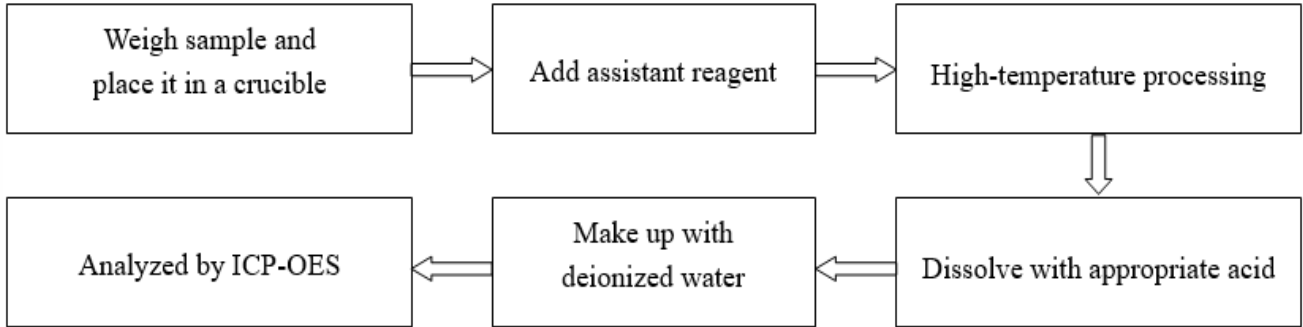
# Test Report

Report No. A2220500829101003

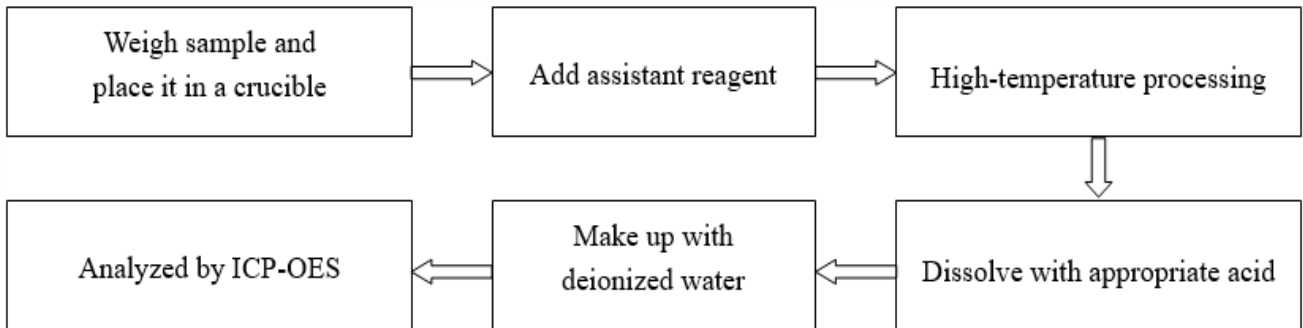
Page 5 of 7

**Test Process**

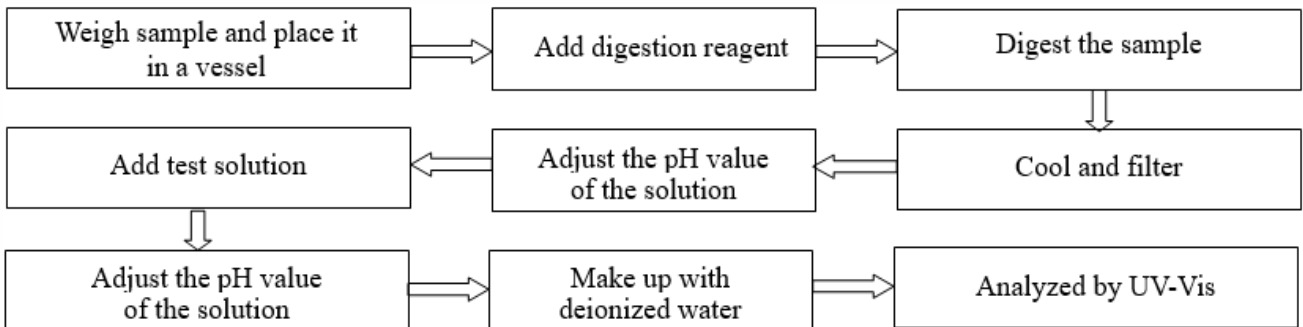
**1. Lead (Pb), Cadmium (Cd), Chromium (Cr)**



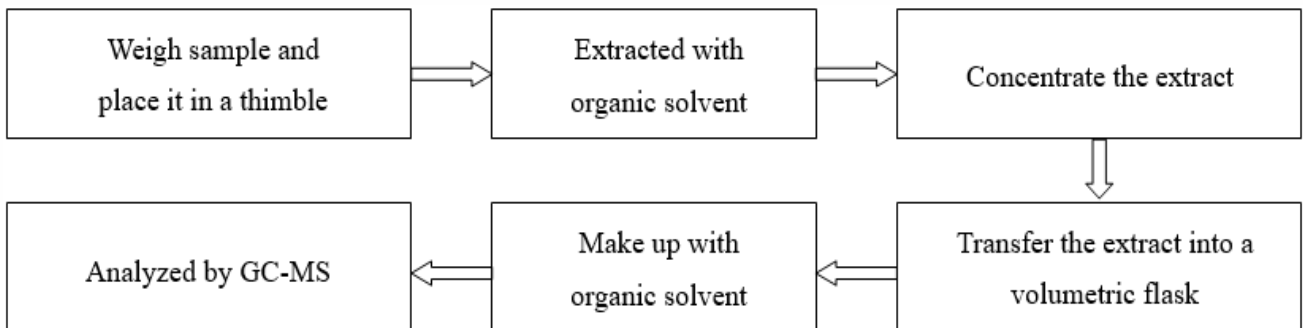
**2. Mercury (Hg)**



**3. Hexavalent Chromium (Cr(VI))**



**4. Polybrominated Biphenyls (PBBs), Polybrominated Diphenyl Ethers (PBDEs)**

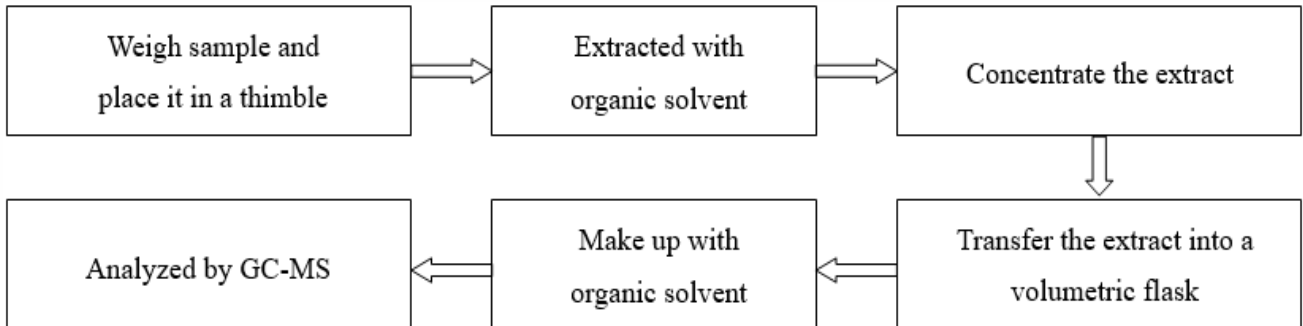


# Test Report

Report No. A2220500829101003

Page 6 of 7

## 5. Phthalates (DBP, BBP, DEHP, DIBP)



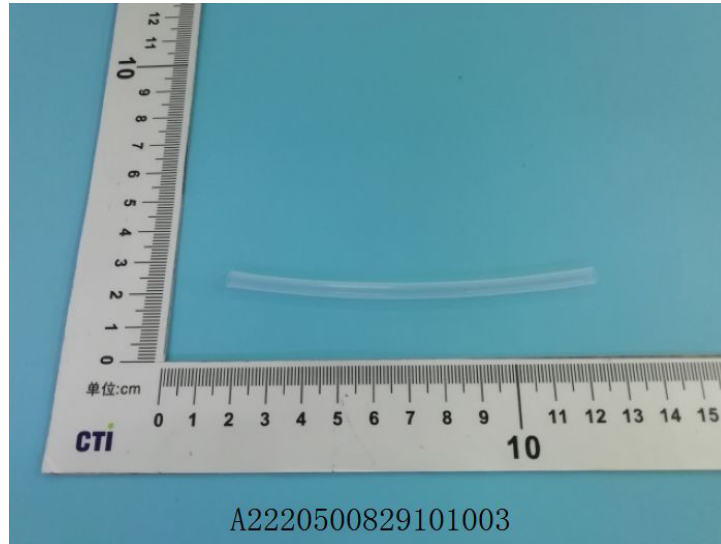
华测检测

# Test Report

Report No. A2220500829101003

Page 7 of 7

## Photo(s) of the sample(s)



### Statement:

1. This report is considered invalid without approved signature, special seal and the seal on the perforation;
2. The Company Name shown on Report and Address, the sample(s) and sample information was/were provided by the applicant who should be responsible for the authenticity which CTI hasn't verified;
3. The result(s) shown in this report refer(s) only to the sample(s) tested;
4. Without written approval of CTI, this report can't be reproduced except in full;
5. In case of any discrepancy between the English version and Chinese version of the testing reports (if generated), the Chinese version shall prevail.

\*\*\* End of report \*\*\*

